

## DEP2026: Twilight Thursdays at Churchill Downs

June 25, 2026

Contact Stuart Williams if you have questions: +1-502-419-7668, [stuart.williams@louisville.edu](mailto:stuart.williams@louisville.edu)

- You will receive your banquet paper tickets when you check in to DEP2026. If you ordered guest tickets, you will receive those tickets too. You need these tickets to get into Churchill Downs.
- The “banquet” has no formal agenda and is not a traditional ‘sit down’ dinner. We reserved an area (Silks Loge) with covered seating overlooking the paddock and access to covered homestretch viewing.
- The Silks Loge is a third floor balcony area. The rest of this immediate area is blocked off, and our group is the only one in this area. Refer to the map of the seating area appended to this document.
- Assuming the conference stays on schedule, the last talk on June 25 concludes at 4:20PM.
- Gates open at 4:00PM. The first race is at 5:00PM, the eighth (last) race is 8:23PM. Races are approximately 29 minutes apart.
- You are welcome to drive yourself to Churchill Downs (free parking), use a ride share, or use the provided school bus (Miller Transportation)
  - The bus will pick up as early as 4:30pm and will first drop off passengers at campus housing (Kurz Hall) and the conference hotel (Homewood Suites). The bus will then return to campus housing (~5:00PM) and conference hotel (~5:20PM) to pick up passengers and take to Churchill Downs.
  - The bus will be at Churchill Downs at 7:45PM and again at 8:40PM to deliver passengers to campus housing and conference hotel.
- Your ticket gets you in as general admission as well as to our semi-private area (Silks Loge). There will be music, food trucks (Ramiro’s Cantina, Spinelli’s Pizza, Red Top Hotdogs, All Thai’d Up, Drake’s), and drink specials (\$2 domestic beers). In the Silks Loge area, we will have a Chef’s Table (menu attached).
- To get to the Silks Lodge area, go through the Paddock Gate and make your way to the north (left) side of the paddock. There will be signs directing you to the Silks Loge elevators. You may need your ticket ready as we will be in a restricted area.
- If you want to participate in betting, you can place cash bets on site or use the TwinSpires app to place electronic betting.

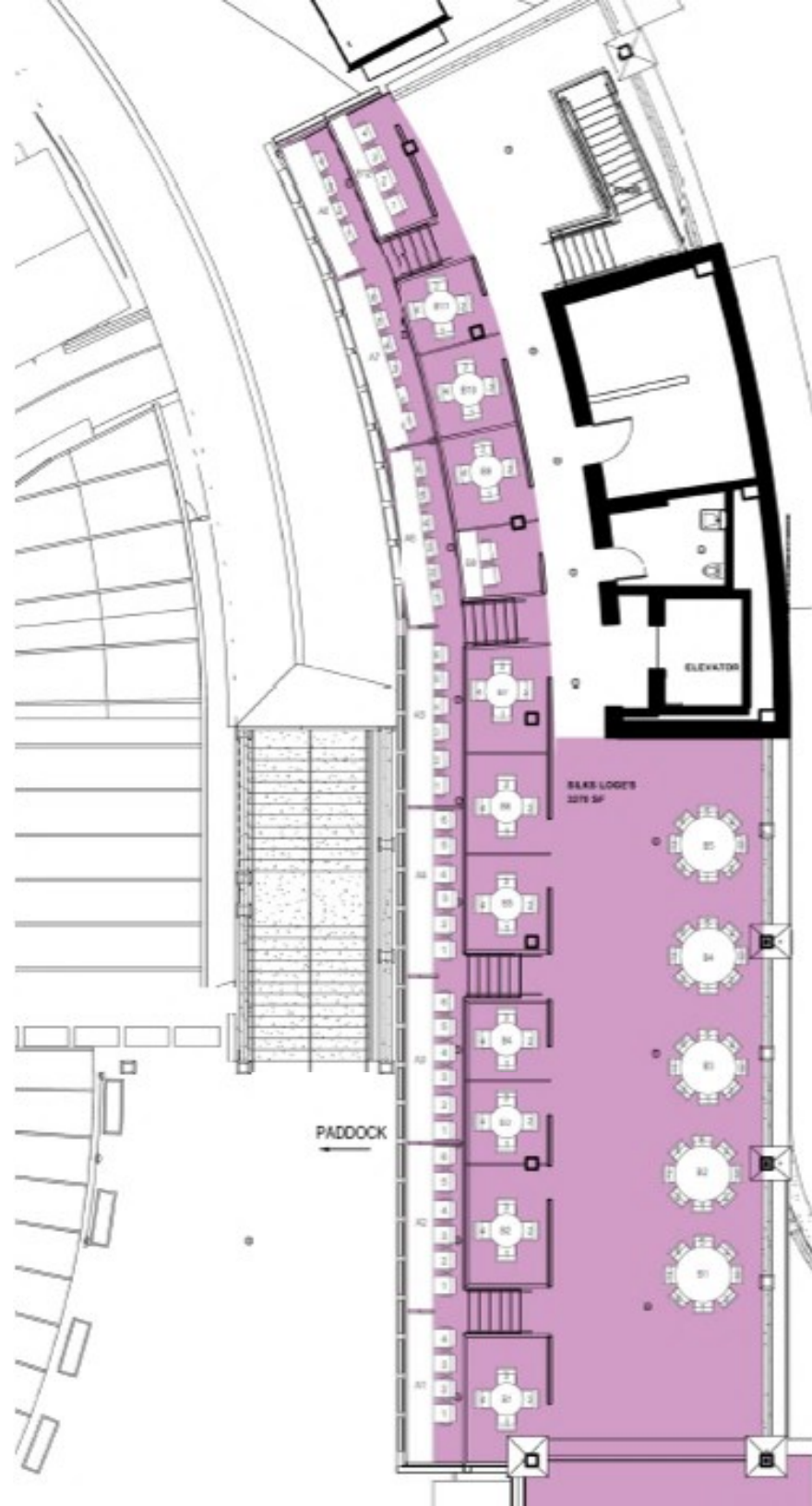
**Bus drop off** and pick up will be in the Executive Gate Roundabout. Walk to the Paddock Gate entrance. The Silks Lodge area is labeled with “2” and is on the second floor. An elevator near that side of the paddock is the easiest way to get there.



If you are using a **ride share service**, have them drop you off at or near the roundabout. Make your way to the Paddock Gate entrance.

If you are driving yourself, **park in the Green/Black/Orange lots** on the northwest side of the grounds.





**Silks Loge**

	Row #	# of Tables	# Seats
Net Seats	A	8	44
	B	12	46
Net Seats Total		20	90
ADA Seats			5
Grand Total		20	90

**Silks Balcony**

	Row #	# of Tables	# Seats
Net Seats	B	5	40
		5	40
Net Seats Total		5	40
ADA Seats			2
Grand Total		5	40



# CHURCHILL DOWNS

## salads

**FARRO APPLE CRUNCH**

**GARDEN SALAD**   

arcadian mix, red onions, tomatoes, carrots, balsamic vinnigrette and ranch dressings

**CAESAR SALAD**

romaine lettuce, shaved Parmesan, croutons, Caesar dressing

## sides

**ROASTED VEGETABLES**   

rotating seasonal vegetables

**HERB ROASTED RED POTATOES**   

house-made herb oil

**ROLLS & BUTTER** 

## entrées

**BLOOD ORANGE PORK BUTT** 

house smoked pork butt, blood orange barbecue Carolina gold barbecue

**CHICKEN FORENTINE** 

spinach, onions, cream

**PASTA FRESCA** 

arugula, red peppers, red onions, tomatoes, garlic, white balsamic dressing

## desserts

**ASSORTED DESSERTS** 

\*PLEASE BE ADVISED THAT COMMON ALLERGENS, INCLUDING EGG, MILK, WHEAT, SOY, SESAME, PEANUTS, TREE NUTS, FISH, AND SHELFISH ARE PRESENT IN OUR FACILITY.

THE POTENTIAL FOR CROSS-CONTACT IS HIGHER AT SELF-SERVE, FRYER, AND MADE TO ORDER STATIONS. IF YOU HAVE A FOOD ALLERGY OR SPECIAL DIETARY NEED, PLEASE SPEAK WITH A MANAGER BEFORE MAKING YOUR SELECTION



\*ALL ITEMS SUBJECT TO CHANGE

SPRING MEET

# bar



## *liquor*

WOODFORD RESERVE BOURBON	18
OLD FORESTER 86 BOURBON	17
HERRADURA SILVER TEQUILA	18
HOUSE GIN	17
HOUSE VODKA	17
HOUSE SCOTCH	17
HOUSE RUM	17

## *beer & seltzer*

BUD LIGHT	9
MILLER LITE	9
COORS LIGHT	9
MICHELOB ULTRA	10
WHITE CLAW	10

## *wine*

KENDALL-JACKSON CHARDONNAY	13
KENDALL-JACKSON PINOT NOIR	13

## *cocktails*

OLD FORESTER MINT JULEP	19
WOODFORD RESERVE SPIRE	19
HERRADURA HORSESHOE MARGARITA	18
OAKS LILY	19

## *juice & mixer*

BLOODY MARY MIX
Q MIXERS GINGER BEER
CRANBERRY JUICE
ORANGE JUICE
GRAPEFRUIT JUICE
PINEAPPLE JUICE

## *soda & water*

COKE
DIET COKE
SPRITE
Q MIXERS CLUB SODA
Q MIXERS TONIC
DASANI WATER

CREDIT CARD ONLY



\*ALL ITEMS SUBJECT TO CHANGE